

Selkirk

*Scottish Borders*  
**FESTIVAL OF  
WALKING**

2 - 9 September 2006



Full Programme of Walks and Evening Events

FREE



**Welcome!**

*To the twelfth Scottish Borders Festival of Walking which will be based on the historic town of Selkirk. Since it was first held in West Linton in 1995, the Festival has travelled the length and breadth of the Scottish Borders with great success, visiting every part of this beautiful area. Participation has increased about fourfold since it was last held in Selkirk in 2000, with many enthusiasts returning each year and meeting up with friends from previous events.*

*The Festival is a week long celebration of walking and the countryside, offering varied and interesting routes to suit walkers of all ages and abilities. There will also be music, talks and a slide show to impart as much as possible of the long and fascinating social, cultural and natural history of the area.*



*Selkirk Hill*

## Selkirk and the Walks Area

Selkirk is a historic Borders town set near the confluence of three major rivers, the Etrick, Yarrow and Tweed. The beautiful valleys through which these rivers flow will provide the backdrop for many of the Festival walks, which will also explore the glorious hill country above the valleys.

Selkirk had a royal castle in the 12th century and was the focal point of the royal hunting forest. It also had an abbey, but this was removed to Kelso. During this period the great freedom fighter William Wallace was proclaimed Guardian of Scotland within the walls of the Forest Kirk. Selkirk's Royal Charter was reconfirmed by King James V in 1535 because all the old charters had been lost because of 'assaults of war, pestilence and fire'.

From the 18th Century onwards, Selkirk became known as a textile manufacturing centre and some of the large mills can still be seen in the riverside area. The centre of the town, around Market Square, however still maintains a medieval street pattern. Selkirk was also noted for shoe manufacturer, and Selkirk natives are called Souters (shoemakers)

Today Selkirk is a busy town with a range of light industry and a good variety of shops, restaurants, cafes and places to stay; it will provide an ideal base for the festival. The walking is of excellent quality using paths and tracks and the open hill country.



## The Festival

During festival week there will be 40 walks, with something to suit walkers of all ages and abilities. All walks are led by experienced leaders and the programme will include interesting and varied walks looking at wildlife, geology, history, archaeology, etc. Leaders will pass on information about the history, culture and wildlife of the area.

In the evenings there will be a full programme of events - illustrated talks dealing with a range of subjects including walking, wildlife and local history, and entertainment featuring local musicians.

On Friday the 8th September there will be the grand Ceilidh in Selkirk High School Hall, with Borders music song and dance.

The final guided walks will be held on Saturday 9th.

## Travel and Transport

Selkirk is on the A7 about 35 miles/56km south of Edinburgh and 55 miles/90km north-east of Carlisle, the two most convenient rail heads (see map). Both are linked to Selkirk by bus.

## Accommodation

The festival area offers a wide range of graded accommodation including hotels, guest houses, bed and breakfast places, caravan and camping sites

and self-catering units. Accommodation enquiries should be directed to VisitScotland Borders  
Phone 0870 608 0404 (option 1)  
Website: [www.visitscottishborders.com](http://www.visitscottishborders.com)  
Email: [bordersinfo@visitscotland.com](mailto:bordersinfo@visitscotland.com).

## Charges

There will be a small charge for each walk of £5 (see booking form for more details). Buses will be provided if needed to take walkers to the start and/or bring them back from the finish at no extra cost.

There is also a charge for the evening events and the closing Ceilidh, as detailed in the programme. Some of the events should be pre-booked due to demand.

## Parking on Walks

Festival buses will leave from the main car park at Selkirk Parish Church Hall. There is ample parking here. Please do not take your car to the start of the walk but park in Selkirk and use the bus provided.

## Registration and Information

The festival event centre will be Selkirk Parish Church Hall, Selkirk (see map) All walk registration will take place here.

**NB Walkers must register each day before setting off on a walk. If you do not register, your name will not be on the leaders list and you may not be allowed onto the walk.**

Information on the festival including walk route maps will be displayed at the Events Centre.



## Walk Numbers

For safety and logistical reasons, walks are limited to either 30 or 40 people. Pre-booking is therefore essential for you to get a place on the walks of your choice. If your selected walk is full, we shall aim to offer you alternative walks on the same day.

Please bring your booking acknowledgement with you when you register each day during the festival.

You can check if a walk is full by phoning 0870 608 0404 (option 1) or emailing to: [bordersinfo@visitscotland.com](mailto:bordersinfo@visitscotland.com) with your enquiry.

## Walks Grading

Festival walks have been graded as Easy, Moderate or Strenuous, and it is hoped that this grading, together with the walk description in the programme, will enable you to select walks suitable for your capabilities and interests. The amount of ascent is given where this is significant.

## Dogs

We would like to point out that dogs are not allowed on the Festival walks, many of which go through livestock areas. This rule is strictly applied. However, it does not apply to guide dogs accompanying registered blind walkers.

## Smoking

We ask all walkers not to smoke while on a guided walk, out of consideration to others and also to avoid undue risk of fire. Thank you.

## Liability

Participants in the Scottish Borders Festival of Walking take part at their own risk, and the organisers and sponsor bodies shall not be liable for any accident or injury, however caused. You are advised to check your own personal accident insurance cover.

## Full Hill Walking Kit

Where this appears the participant is expected to be adequately equipped with the following: warm clothes, waterprofs and hill walking boots.

## Disabled Walks



### Know the Code

Everyone has the right to be on most land and water providing they act responsibly. Your access rights and responsibilities are explained fully in the Scottish Outdoor Access Code.

Whether you're in the outdoors or managing the outdoors, the key things are to:

- *Take responsibility for your own actions;*
- *Respect the interests of other people;*
- *Care for the environment.*

Find out more by visiting: [www.outdooraccess-scotland.com](http://www.outdooraccess-scotland.com) or phoning Scottish Natural Heritage



## THE PROGRAMME OF WALKS

For evening entertainment events  
please see page 20

### Symbols

**H** - full hillwalking gear must be carried.

**L** - packed lunch should be taken.

## SATURDAY 2 SEPTEMBER

### Walk 1

**H L**

*Traquair to Selkirk via the  
Three Brethern*

Length: 12 miles/19km

Start: Bus from Selkirk Parish  
Church Hall 09.00

Finish: Opening Ceremony  
Auld Kirkyard, Selkirk 16.00

Leaders: Peter and Evelyn Horsburgh

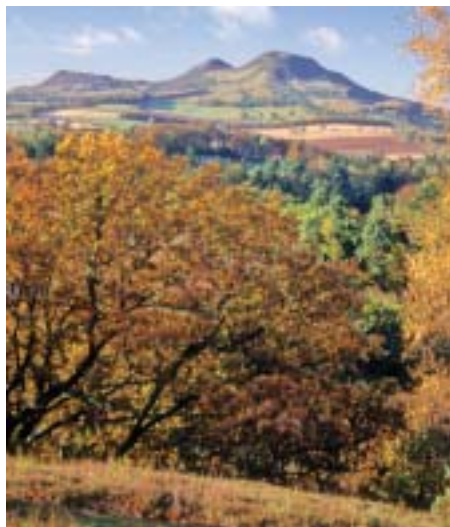
Grade: Strenuous

Limit: 30

Bus required: Yes

### *About the Walk*

“The walk starts at Traquair Hall and follows the Southern Upland Way passing the Cheese Well and traversing the Minch Moor Road, an ancient right of way and droving route. The Three Brethern cairns are passed before descending to cross the Long Philip Burn and up to Tibbie Tamson’s grave. Then a descent through woodlands to Selkirk where Walks 2, 3 and 4 are joined at the Auld Kirkyard for the Festival opening ceremony.”



*The Eildons*

### Walk 2

**H L**

*Melrose to Selkirk*

Length: 10 miles/15km

Start: Bus from Selkirk Parish Church  
Hall at 10.00.

Finish: Opening Ceremony Auld  
Kirkyard Selkirk at 16.00

Leaders: Christine and Stan Scott

Grade: Moderate

Limit: 40

Bus required: Yes

### *About the Walk*

“The walk starts at Melrose Abbey and follows St. Cuthbert’s Way over the Eildon Hills to Bowden. Then, by an ancient drove road passing the ruins of Holydean Castle, Lindean Loch, Bell Hill Iron-age fort. Continuing over the Rig, Scotland’s oldest race-course and down into Selkirk where Walks 1 3 and 4 are joined at the Auld Kirkyard for the Festival opening ceremony.”



### Walk 3

#### *Ashkirk to Selkirk*

Length: 8 miles/13km

Start: Bus from Selkirk Parish Church at 11.00.

Finish: Opening Ceremony Auld Kirkyard, Selkirk at 16.00.

Leaders: Drew Laurie

Grade: Moderate

Limit: 30

Bus required: Yes

**H L**

#### *About the Walk*

“This Walk follows part of the Borders Abbey Way, It starts along the Thief’s Road, an ancient right of way, and later climbs to pass through Hartwoodmyres Forest, Brown Muir and close to the Haining, an 18th century house on the outskirts of Selkirk. Walks 1 2 and 4 are joined at the Auld Kirkyard for the Festival opening ceremony.”

### Walk 4

#### *Bowhill Estate to Selkirk*

Length: 5 miles/8km

Start: Bus from Selkirk Parish Church Hall at 11.00.

Finish: Opening Ceremony Auld Kirkyard Selkirk at 16.00.

Leaders: David Wild, Bowhill Ranger

Grade: Moderate

Limit: 40

Bus required: Yes

**H L**

#### *About the Walk*

“The walk starts in Bowhill Estate with an introduction to Bowhill by the Countryside Ranger. The route then goes through the estate to Gilkeeket crossing the Ettrick by a footbridge at Oakwood Mill. The route then continues by tracks and single-track road past Middlestead and through the Haining to Selkirk. Walks 1, 2 and 3 are joined at the Auld Kirkyard for the Festival opening ceremony.”



*Bowhill Loch*

### Walk 5

#### *Selkirk’s Industrial Past*

Length: 2 miles/3km

Start: Selkirk Swimming Pool, 13.30

Finish: Selkirk Swimming Pool, 16.30 approx.

Leaders: John Hunter and Doug Smith

Grade: Easy D

Limit: 30

Bus required: No

#### *About the Walk*

“This walk is fairly flat and is suitable for the disabled and wheelchair users (with helpers). The route starts by following the River Ettrick, the powerhouse of Selkirk’s early industry. It will pass sites of mills and former mills providing a unique insight into Selkirk’s Industrial heritage. A brief history of each mill will be given.



**SUNDAY 3 SEPTEMBER**

### *Walk 6*

**H L**

#### *Traquair to St. Mary's Loch*

10 miles/15km 12 miles/19km

**Start:** Bus from Selkirk Parish Church Hall approx. 09.30.

**Finish:** St. Mary's Loch, 16.45 approx. for bus back to Selkirk.

**Grade:** Strenuous

**Limit:** 30

**Bus required:** Yes

#### *About the Walk*

This walk starts at Traquair and follows the Southern Upland Way, climbing up over the moor with excellent views before dropping down to Blackhouse where James Hogg worked as a young shepherd. The ruined Tower was a Douglas stronghold. The walk continues over the hills to the ancient site of St. Mary's Kirk of the Lowes where walks 7 and 8 are joined for an open air service.

### *Walk 7*

**H L**

#### *Ettrick Church to St. Mary's Loch*

**Length:** 10 miles/15km.

**Start:** Bus from Selkirk Parish Church Hall 09.00.

**Finish:** St. Mary's Loch, 16.45 approx. for bus back to Selkirk.

**Leaders:** Christine and Stan Scott.

**Grade:** Moderate

**Limit:** 40

**Bus required:** Yes

#### *About the Walk*

Starting at the Boston Hall the route follows the Ettrick Valley to join the Southern Upland Way at Scabcleuch. It then climbs to a ridge at 483m before descending Riskenhope. A pleasant walk along Loch o' the Lowes to Tibbie Shiel's where the route follows the south side of St. Mary's Loch and on to the ancient site of St. Mary's Kirk of the Lowes where walks 7 and 8 are joined for an open-air service.

### *Walk 8*

**H**

#### *St. Mary's Loch Circular*

**Length:** 6 miles/8km

**Start:** Bus from Selkirk Parish Church Hall at 12.30.

**Finish:** St. Mary's Loch, 16.45 approx for bus back to Selkirk

**Leaders:** Atholl Innes

**Grade:** Easy

**Limit:** 40

**Bus required:** Yes

#### *About the Walk*

The walk starts at the monument to James Hogg, The Ettrick Shepherd at the west end of St. Mary's Loch. It passes Tibbie Shiels Inn, famous watering hole of Hogg, Sir Walter Scott and many of Scotland's 19th century literati. It then follows the Southern Upland Way along the south side of the Loch with beautiful views of the Loch and surrounding hills and on to the ancient site of St. Mary's Kirk of the Lowes where walks 7 and 8 are joined for an open-air service.



March Wood St Mary's Loch

### Walk 9

#### *Hart Fell and Saddle Yoke*

Length: 9 miles/14km

Start: Bus from Selkirk Parish Church Hall at 08.30.

Finish: Capplegill, 16.30 approx. for bus back to Selkirk

Leaders: Gavin Kellet

Grade: Very Strenuous

Limit: 30

Bus required: Yes

**H L**

#### *About the Walk*

The walk starts at Capplegill and climbs steeply up onto Hart Fell with spectacular views over to the Solway and the Lake District. The route then rounds the head of Black Hope and up onto a narrow ridge over Saddle Yoke before descending back to Capplegill. Full hillwalking gear is essential.

### Walk 10

#### *Selkirk/Tweed Bridge Circular*

Length: 6 miles/10km

Start: Selkirk Swimming Pool, 13.30

Finish: Selkirk Swimming Pool, 16.30 approx.

Leaders: John Hunter

Grade: Easy D

Limit: 30

Bus required: No

#### *About the Walk*

This walk while being flat is over 6 miles in length and those registering who are in wheelchairs or disabled may have to bring their own helpers. It begins at the swimming pool and follows the River Ettrick for the first mile or so. It then uses the Selkirk to Galashiels cycle/walkway beside the A7, past Lindean to Tweed Bridge. The return journey to Selkirk starts here by crossing the bridge over the old A7 and following the route of that now closed road back to Lindean where the outward route is rejoined for the return to Selkirk.

## MONDAY 4 SEPTEMBER

### Walk 11

#### *Tweedbank to Clovenfords*

Length: 11 miles/15km

Start: Bus from Selkirk Parish Church Hall at 09.30.

Finish: Clovenfords, 16.30 approx. for bus back to Selkirk.

Leaders: SBC Ranger Service.

Grade: Moderate

Limit: 40

Bus required: Yes

#### *About the Walk*

A linear walk, starting near Gunknowe Loch. This walk goes along the Tweed and in to Langlee Woods for good views across to the Eildons. The route continues across Ladhope Moor forest, past Buckholm to Torwoodlee Broch via the Golf course. It continues to Clovenfords by farm tracks.





### *Walk 12*

#### *Dob's Linn to St. Mary's Loch*

**Length:** 6 miles/10km

**Start:** Bus from Selkirk Parish Church Hall at 09.30

**Finish:** St. Mary's Loch, 15.00 approx. for bus back to Selkirk.

**Leaders:** Dan Watson, NTS Ranger.

**Grade:** Strenuous

**Limit:** 30

**Bus required:** Yes

#### *About the Walk*

This walk starts at Dob's Linn just east of the Grey Mare's Tail, world famous as a site of geological interest. After a walk through the Linn the walk will continue to Birkhill and then climb steeply up onto the ridge dividing the Ettrick and Moffat Valleys. It will then continue along the ridge before dropping down to the head of St. Mary's Loch.



*Three Brethren*

### *Walk 13*

#### *Selkirk North Marches*

**Length:** 10 miles/15km

**Start:** Selkirk Parish Church Hall at 09.30.

**Finish:** Selkirk Parish Church Hall, 16.00 approx.

**Leaders:** Atholl Innes and Hamish Dobson.

**Grade:** Strenuous

**Limit:** 40

**Bus required:** No

#### *About the Walk*

The walk follows one of the routes taken by riders during the annual Selkirk Common Riding. It passes the grave of Tibbie Tamson, said to have been a witch, and the notable landmark of the Three Brethren cairns before descending to Selkirk

### *Walk 14*

#### *Yarrowford Circular Walk*

**Length:** 8 miles/13km

**Start:** Selkirk Parish Church Hall at 09.30.

**Finish:** Yarrowford, 15.30 approx. for bus back to Selkirk

**Leaders:** Peter and Evelyn Horsburgh.

**Grade:** Moderate

**Limit:** 40

**Bus required:** Yes

#### *About the Walk*

From Yarrowford the walk climbs the ancient Minchmoor Road passing Wallace's Trench to Harelaw. The route then turns east along the old drove road over Brown Knowe (523 m) to the Three Brethren. The route then returns to Yarrowford with spectacular views from Foulshiels Hill and passing Scotland's first youth hostel at Broadmeadows.



### Walk 15

#### Philiphaugh Battlefield Walk

Length: 4 miles/7km

Start: Selkirk Swimming Pool at 14.00.

Finish: Selkirk Swimming Pool 17.00 approx.

Leaders: Sir Michael Strang-Steel.

Grade: Easy

Limit: 30

Bus required: No

#### About the Walk

The walk visits the area where the Battle of Philiphaugh, which effectively ended the career of the Marquis of Montrose, was fought on 13th September 1645 and includes a visit to the Covenanters' Memorial. The walk takes in a stretch of riverside with an opportunity to visit the Philiphaugh Heritage Project's restored water wheel and Visitor Centre.

**TUESDAY 5 SEPTEMBER**

### Walk 16

#### Ettrick Pen

Length: 8 miles/13km

Start: Bus from Selkirk Parish Church Hall at 08.30

Finish: Potburn, 16.00 approx. for bus back to Selkirk

Leaders: Gordon Junor

Grade: Very Strenuous

Limit: 20

Bus required: Yes



#### About the Walk

This high level walk round the head of the Ettrick Valley visits Ettrick Pen, Wind Fell and Capel Fell (all above 600m). A chance to see upland wildlife and enjoy spectacular views. Full hillwalking gear is essential.



Ettrick at Nether Phawhope

### Walk 17

#### Selkirk South Marches

Length: 14 miles/22km

Start: Selkirk Parish Church Hall, 09.30

Finish: Selkirk Parish Church Hall, 16.00 approx.

Leaders: Atholl Innes

Grade: Strenuous

Limit: 25

Bus required: Yes



#### About the Walk

The land which makes up the South Marches was given to Selkirk by James V in 1535 in return for The Burgh's services at the Battle of Flodden. From Selkirk, the walk goes via Lindean Loch and then old tracks to the village of Lilliesleaf. The estates of Riddell and Whitmuir are crossed and the walk passes Scotland's oldest racecourse before returning to Selkirk.



### Walk 18

H L

#### *Harehead, Three Brethren, Linglie*

Length: 8 miles/13km

Start: Selkirk Swimming Pool at 09.30.

Finish: Selkirk Swimming Pool 15.30 approx

Leaders: Frank Harkness

Grade: Moderate / Strenuous

Limit: 30

Bus required: No

#### *About the Walk*

This walk climbs Harehead Hill for spectacular views of the Yarrow Valley then goes on to the Three Brethren by way of Tibbie Tamson's grave. The route then skirts Peat Law and on to Linglie Hill where traces of the ancient 'Pict's Work' known as the Catrail can be seen. Throughout the walk, weather permitting the views of Selkirk, the Cheviots and the surrounding Border Hills are outstanding.



Bell Hill Selkirk

### Walk 19

#### *Selkirk's Royal Mile*

Length: 5 miles/8km

Start: Selkirk Parish Church Hall, 14.00

Finish: Selkirk Parish Church Hall, 16.30 approx.

Leaders: Ian McGhee

Grade: Easy

Limit: 40

Bus required: No

#### *About the Walk*

The walk largely follows ancient rights of way, some dating back to the time when King David I founded an abbey in Selkirk in 1110. The route includes the French POW's Bush, Old Lindean Kirk, outlying farms and Common Land on Selkirk Hill.

### Walk 20

H L

#### *Hawick to Selkirk - Borders Abbeys Way*

Length: 9 miles/13km

Start: Bus from Selkirk Parish Church Hall at 09.30

Finish: Selkirk Parish Church Hall 16.00 approx.

Leaders: SBC Ranger

Grade: Moderate

Limit: 40

Bus required: Yes

#### *About the Walk*

This route follows a fine section of the Borders Abbeys Way from just north of Hawick - Drinkstone cross roads - along drove roads and farm tracks with excellent views.

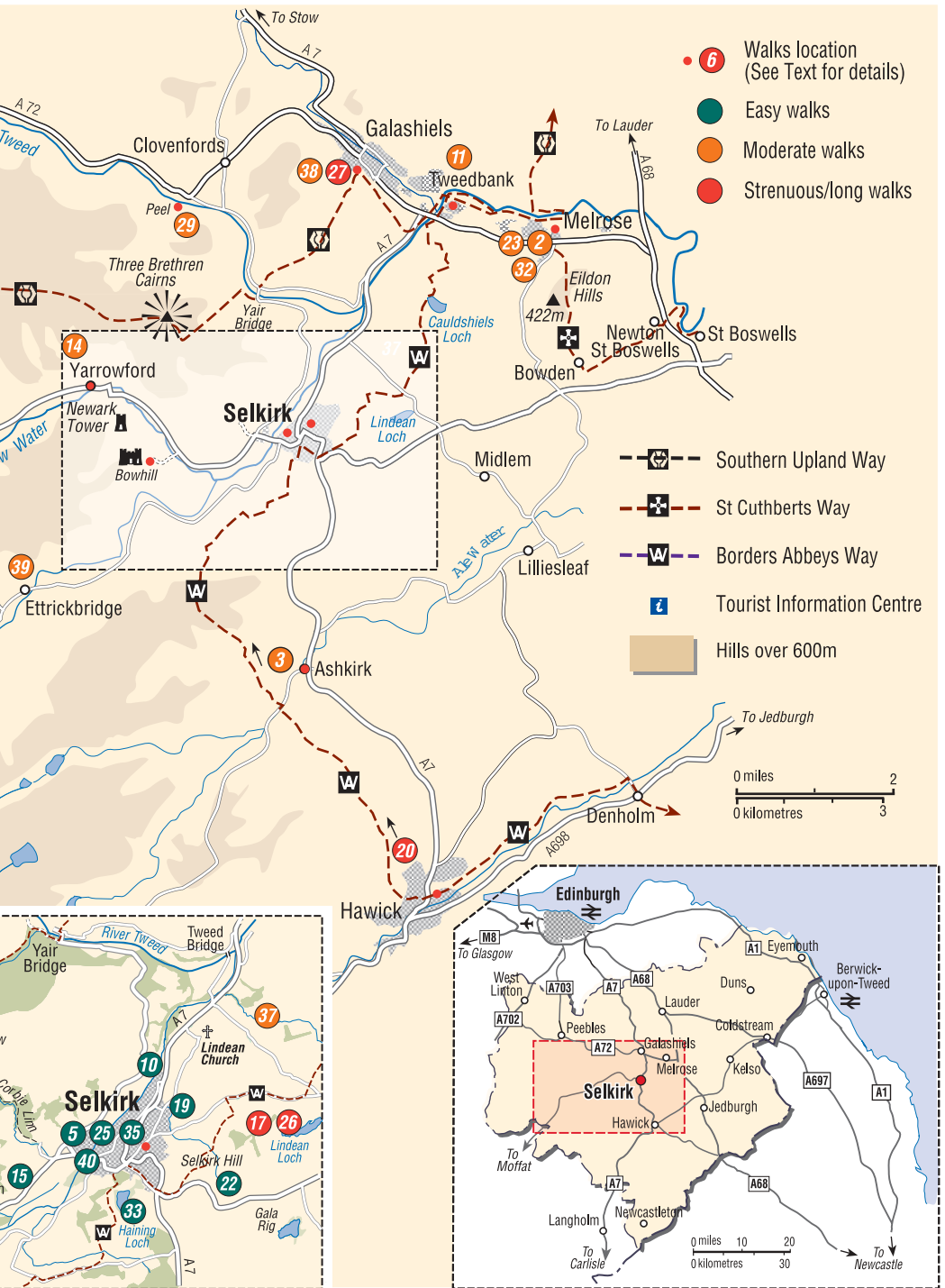


# Location of Guided Walks

## Selkirk

2nd - 9th September





- 6 Walks location (See Text for details)
- Easy walks
- Moderate walks
- Strenuous/long walks

- Southern Upland Way
- St Cuthberts Way
- Borders Abbeys Way
- Tourist Information Centre
- Hills over 600m

0 miles 2  
0 kilometres 3

0 miles 10 20  
0 kilometres 30



**WEDNESDAY 6 SEPTEMBER**

### *Walk 21*

#### *Duchess Drive*

Length: 7 miles/11km

Start: Bus from Selkirk Parish Church Hall at 09.30

Finish: Bowhill, 14.30 approx. for bus back to Selkirk

Leaders: David Wild, Bowhill Ranger

Grade: Moderate

Limit: 40

Bus required: Yes

**H L**

#### *About the Walk*

Following an introduction to Bowhill by the countryside ranger, the walk will ascend into the woodlands that grace Pernassie Hill. The route then sweeps up, across the high Grouse moors to the north offering stunning views of Bowhill and the surrounding landscape before returning to Bowhill via the historic Newark Castle.

### *Walk 22*

#### *Selkirk Hill*

Length: 4 miles/7km

Start: Selkirk Parish Church Hall at 10.00

Finish: Selkirk Parish Church Hall 12.30 approx

Leaders: Susan Kevan SBC Ranger and member of Hill Management

Grade: Easy

Limit: 40

Bus required: No

#### *About the Walk*

The walk explores the varied habitats on the common land of Selkirk Hill. This includes ponds, wetland areas and woodlands as well as the golf course. There are excellent views across Selkirk.

### *Walk 23*

#### *Melrose to Yair - Southern Upland Way*

Length: 8 miles/13km

Start: Bus from Selkirk Parish Church Hall at 09.30

Finish: Lindinny car park, Yair, 16.00 approx. for bus back to Selkirk.

Leaders: SBC Ranger Service

Grade: Moderate

Limit: 40

Bus required: Yes

**H L**

#### *About the Walk*

This walk follows the Southern Upland Way from Melrose by the side of the Tweed, along the old Waverley line, through Galashiels and over open farmland to Yair. It offers a good opportunity to see a variety of woodland, upland and riverside wildlife and to learn about local history.

### *Walk 24*

#### *The Bodesbeck Ridge*

### *Walk 24*

#### *The Bodesbeck Ridge*

Length: 12 miles/20km

Start: Bus from Selkirk Parish Church Hall at 08.30

Finish: St. Mary's Loch, 16.30 approx. for bus back to Selkirk

Leaders: Atholl Innes/Gordon Junor

Grade: Very Strenuous

Limit: 20

Bus required: Yes

**H L**

### *About the Walk*

This beautiful ridge walk provides superb and unusual views across to the Grey Mare's Tail and Loch Skene. The view from the ridge extends to the Solway Firth in clear conditions. The walk ends by descending to the Loch of the Lowes to reach St. Mary's Loch. Full hillwalking gear is essential.



*St Mary's Loch*

### *Walk 25*

#### *Historic Town Walk*

**H L**

Length: 3 miles/5km

Start: Selkirk Parish Church Hall at 18.00

Finish: Selkirk Parish Church Hall 20.00 approx.

Leaders: Margaret Smith

Grade: Easy D

Limit: 30

Bus required: No

### *About the Walk*

This evening walk tours the Ancient and Royal Burgh of Selkirk visiting many sites of historic interest. Sir Walter Scott and Mungo Park's statues, the Auld Kirkyard where Wallace was reputed to be made Guardian of Scotland and many other historical sites.

## THURSDAY 7 SEPTEMBER

### *Walk 26*

#### *Selkirk South Marches*

**H L**

Length: 14 miles/22km

Start: Selkirk Parish Church Hall, 09.30

Finish: Selkirk Parish Church Hall, 16.00

Leaders: Atholl Innes

Grade: Strenuous

Limit: 25

Bus required: No

### *About the Walk*

The land which makes up the South Marches was given to Selkirk by James V in 1535 in return for The Burgh's services at the Battle of Flodden. From Selkirk, the walk goes via Lindean Loch and then old tracks to the village of Lilliesleaf. The estates of Riddell and Whitmuir are crossed and the walk passes Scotland's oldest racecourse before returning to Selkirk.

### *Walk 27*

#### *The Gala Alps*

Length: 12 miles/20km

Start: Bus from Selkirk Parish Church Hall 09.00 approx.

Finish: Scott Park, Galashiels, 16.30 approx. for bus to Selkirk

Leaders: Stan Scott

Grade: Strenuous

Limit: 30

Bus required: No

### *About the Walk*

This walk is a ring of the hills to the west of Galashiels - Buckholm, William Law, Meigle Hill and Gala Hill - involving a few steady climbs. The route provides a mixture of great views and interesting historical sites. 'Dobies Grave', Torwoodlee Broch and 'Wallace's Putting Stone' are all passed on the way. Altogether an interesting and demanding day.



### Walk 28

H L

#### *St. Mary's Loch and Riskenhope*

Length: 8 miles/13km

Start: Bus from Selkirk Parish Church Hall at 09.30

Finish: Glen Cafe, 15.30 approx. for bus back to Selkirk

Leaders: Frank Harkness

Grade: Moderate

Limit: 30

Bus required: Yes

#### *About the Walk*

This walk starts on the Southern Upland Way at Dryhope and follows the shores of St. Mary's Loch and Loch of the Lowes to Riskenhope. The walk then climbs up to the head of Riskenhope where the Covenanting martyr, Renwick preached his last sermon to a crowd of hundreds hidden deep in the hills. The route then winds through the hills to finish back at St. Mary's Loch. There are many reminders of James Hogg, the Ettrick Shepherd along the way.



SUW Crosscleuch The Captains Road

### Walk 29

H L

#### *Peel to Melrose*

Length: 10 miles/16km

Start: Bus from Selkirk Parish Church Hall at 09.30

Finish: Melrose Abbey 16.30 approx. for bus back to Selkirk

Leaders: SBC Ranger Service

Grade: Moderate

Limit: 40

Bus required: Yes

#### *About the Walk*

This walk follows a fine stretch of the Tweed from Ashiestiel Bridge, Peel to Melrose.

### Walk 30

H L

#### *Philiphaugh Estate*

Length: 6 miles/10km

Start: Selkirk Swimming Pool at 10.30

Finish: Selkirk Swimming Pool, 15.00 approx.

Leaders: Sir Michael Strang-Steel

Grade: Moderate

Limit: 30

Bus required: No

#### *About the Walk*

This walk leaves Selkirk and travels through Philiphaugh Estate climbing to the top of Harehead Hill for beautiful views of the Ettrick and Yarrow Valleys. The route then returns down through the Estate with an explanation of its management by Sir Michael Strang-Steel. The walk visits the Philiphaugh Heritage Project's restored water wheel and Visitor Centre. Returning to Selkirk passing the site of the Battle of Philiphaugh (1645).



**FRIDAY 8 SEPTEMBER**

*Walk 31*

**H L**

*Grey Mare's Tail and Loch Skene*

Length: 8 miles/13km

Start: Bus from Selkirk Parish Church Hall at approx. 08.30

Finish: Grey Mare's Tail, 16.00 approx. for bus back to Selkirk

Leaders: Gavin Kellet

Grade: Very Strenuous

Limit: 25

Bus required: Yes

*About the Walk*

The walk climbs steeply above the Grey Mare's Tail waterfall and then climbs to White Coomb and follows the ridge round high above the head of Loch Skene by Firthyhope Rig, Firthybrig Head and Lochcraig Head. Potentially spectacular views all the way. Full hillwalking is gear essential.

*Walk 32*

**H L**

*Melrose and Cauldshiels Loch*

Length: 9 miles/14km

Start: Bus from Selkirk Parish Church Hall at 09.30

Finish: Melrose Tourist Information Centre, approx. 16.00 for bus back to Selkirk

Leaders: SBC Ranger Service

Grade: Moderate

Limit: 40

Bus required: Yes

*About the Walk*

This is a circular walk from Melrose going up Rhymer's Glen, past Cauldshiels Loch and Abbotsford House before returning to Melrose along the bank of The Tweed. It offers a good opportunity to see a variety of woodland, upland and riverside wildlife.

*Walk 33*

**H L**

*The Haining Estate, Selkirk*

Length: 4 miles/7km

Start: 13.30

Finish: 16.00

Leaders: Margaret Smith

Grade: Easy

Limit: 30

Bus required: No

*About the Walk*

A guided tour around the Haining Estate on the edge of Selkirk, visiting the 18th century house and stables. Interesting descriptions and commentary by a well-informed local guide. Includes a walk round the Haining Loch with opportunities to see a variety of birdlife.



*Walk 34*

**H L**

*Traquair to Selkirk*

Length: 13 miles/21km

Start: Bus from Selkirk Parish Church Hall at approx. 09.00

Finish: Selkirk Parish Church Hall, 16.00 approx.

Leaders: Christine and Stan Scott

Grade: Strenuous

Limit: 40

Bus required: Yes



### *About the Walk*

The walk climbs up the Southern Upland Way from Traquair, passing the modern 'Living Sculptures' and the Cheese Well near the summit of Minchmoor. The route then drops to Yarrowford and follows the Yarrow past the ancient royal retreat of Newark Tower along Lady's Walk to the Covenanter's Monument in Philiphaugh Estate. The walk rejoins the Yarrow, past the 'Meetings' of the Yarrow and the Ettrick to the water wheel and salmon-viewing centre.

### *Walk 35*

#### *Selkirk's Industrial Past*

Length: 2 miles/3km

Start: Selkirk Swimming Pool, 10.30

Finish: Selkirk Swimming Pool, 12.30

Leaders: John Hunter and Doug Smith

Grade: Easy D

Limit: 30

Bus required: No

### *About the Walk*

This walk is fairly flat and is suitable for the disabled and wheelchair users (with helpers). The route starts by following the River Ettrick, the powerhouse of Selkirk's early industry. It will pass sites of mills and former mills providing a unique insight into Selkirk's Industrial heritage. A brief history of each mill will be given.

## SATURDAY 9 SEPTEMBER

### *Walk 36*

#### *Megget Stane to Broad Law*

**H L**

Length: 10 miles/15km

Start: Bus from Selkirk Parish Church Hall at approx. 08.30

Finish: Craigierig, 16.30 approx. for bus back to Selkirk

Leaders: Alan Tait

Grade: Very Strenuous

Limit: 25

Bus required: Yes (2 Mini-buses)

### *About the Walk*

An exhilarating walk from the Megget Stane leading up to Broad Law at 840m/2756ft. The walk continues over Cramalt Crag, Fifescar and Dollar Law before joining the old Thief's Road down to Craigierig. The site of Cramalt Tower can be seen. There is no defined path for much of the way but the walking is generally good. Full hillwalking gear is essential.



*Megget Reservoir from Cramalt*



### Walk 37

#### *The Three Lochs*

Length: 11 miles/17km

Start: Selkirk Parish Church Hall, 09.30

Finish: Selkirk Parish Church Hall, 16.00 approx.

Leaders: Frank Harkness

Grade: Moderate

Limit: 30

Bus required: No

H L

#### *About the Walk*

This walk takes us to the 'Prisoner's Bush' on the Bridgelands Road past the Old Lindean Kirk to the village of Lindean where we follow the Borders Forest Trust route through Upper Faldonside Farm, past Faldonside Loch to Cauldshiels Loch where there will be a lunch stop. The return is via the drove road to Lindean Loch following the road to Selkirk Hill and back into the town centre.

### Walk 38

#### *Galashiels to Selkirk*

Length: 8 miles/13km

Start: Bus from Selkirk Parish Church Hall at approx. 09.00

Finish: Selkirk Parish Church Hall 14.00 approx.

Leaders: Atholl Innes

Grade: Moderate

Limit: 30

Bus required: Yes

The walk starts at Galashiels Swimming Pool and follows the Southern Upland Way to Yair Bridge. It then heads along the east bank of the River Tweed to its junction with the Ettrick Water. It crosses two old stone bridges and then joins a footpath back into Selkirk

### Walk 39

#### *Ettrickbridge to Selkirk*

Length: 8 miles/13km

Start: Bus from Selkirk Parish Church at approx. 09.30

Finish: Selkirk Parish Church Hall approx. 14.30

Leaders: Drew Laurie

Grade: Moderate

Limit: 30

Bus required: Yes

H L

#### *About the Walk*

An attractive walk beginning at Ettrickbridge and travelling along the north bank of the Ettrick into Bowhill Estate. The route then goes through the estate to Gilkeeket crossing the Ettrick by a footbridge at Oakwood Mill continuing by tracks and single-track road past Middlestead and through the Haining to Selkirk.

### Walk 40

#### *Historic Town Walk*

Length: 3 miles/5km

Start: 10.00

Finish: 12.00

Leaders: Margaret Smith

Grade: Easy D

Limit: 30

Bus required: No

#### *About the Walk*

This morning walk tours the Ancient and Royal Burgh of Selkirk visiting many sites of historic interest. Sir Walter Scott and Mungo Park's statues, the Auld Kirkyard where Wallace was reputed to be made Guardian of Scotland and many other historical sites.



## EVENING ENTERTAINMENT PROGRAMME

### SATURDAY 2nd SEPTEMBER

Opening Ceremony at Auld Kirkyard, Kirk Wynd, Selkirk 16.00  
With Rev. Jim Campbell from Selkirk Parish Church

Walkers Welcome Reception

County Hotel Function Suite, High Street, Selkirk 19.30

Come along and meet old friends and new for your week of walking.  
Welcome by chairman of the Walking Festival, Councillor Gordon Edgar and  
chairman of Selkirk Community Council, Kenneth Gunn. Folk Music from Gael  
Force and Bar

### SUNDAY 3rd SEPTEMBER

Open Air Service at St Mary's Churchyard, St Mary's Loch at 16.00 (approx.)  
At end of the walks. Come and worship together at an ancient site where once  
Covenanters met to pray in secret. Service led by Rev. Samuel Siroky, Minister of  
Yarrow Kirk.

### MONDAY 4th SEPTEMBER

Life in the Border Hills. At 19.30

Talk and Demonstration by Tweed Valley Mountain Rescue and the Border  
Ranger Service. 19.30. Angus O'Malley's Sports Bar, Chapel Place, Selkirk.

Licensed bar.

Free Admission

### TUESDAY 5th SEPTEMBER

An evening of Traditional Music in The County Hotel Function Suite. 19.30  
Come along and listen to traditional Border Pipes, fiddle, accordion music and  
singers from across the Scottish Borders.

Admission £2



## WEDNESDAY 6th SEPTEMBER

Looking at Selkirk's historical past. 19.30 Angus O'Malley's Sports Bar  
The Royal and Ancient Burgh of Selkirk was already described as "a very old town" when King David came to the Scottish throne in the twelfth century. Come along and hear more about the town and its literary, military and even royal characters.

Admission by collection

## THURSDAY 7th SEPTEMBER

"Selkirk Ghost Walk" at 21.00 followed by Quiz Night 19.30

We know you may have been walking all day but you are going to enjoy this shared experience in the twilight of a September evening as you visit the spookier corners of the "auld grey town". A theatrical "happening" not to be missed.

Limited numbers

Tickets £4.00

Quiz Night 19.30 in the County Hotel, Selkirk

Free Admission

## FRIDAY 8th SEPTEMBER

Grand Ceilidh and Dance. 19.30 in Selkirk High School Hall

The Caberston Ceilidh Band with caller . . . so you can learn the dances as we go.

Special cabaret by The Riddell Fiddles. Stovie Tatties and Oatcakes.

Admission £5

*Please note that at Selkirk Parish Church Hall where all walks start from and the registration point is situated there will be tea, coffee and snacks available at the start and finish of the walks.*



## Other Festivals

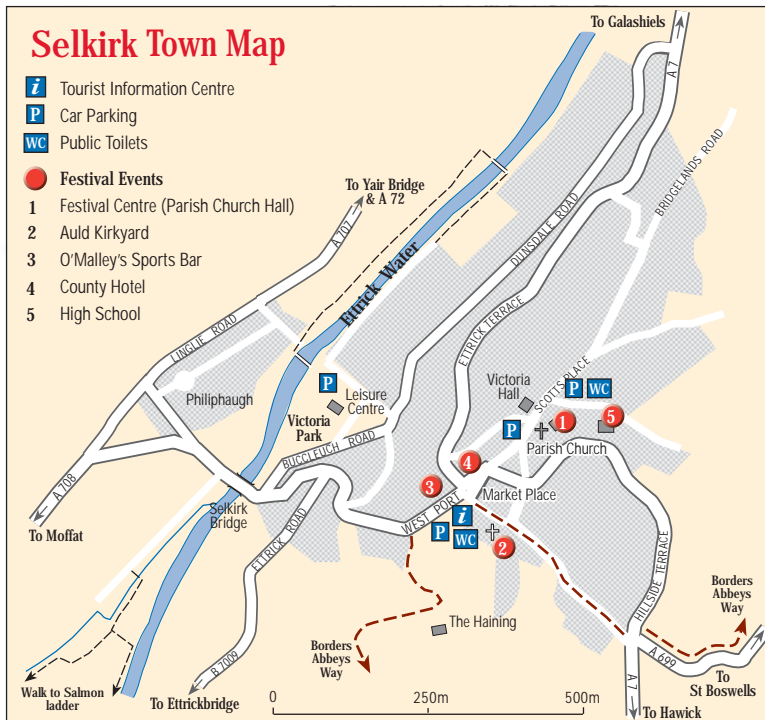
There are now many Walking Festivals in Scotland, from April to October each year. For further information on current festivals in Scotland and dates for 2006-07 (where known), visit [www.walkingwild.com](http://www.walkingwild.com). This site has interesting information on walking in Scotland. For events in the Borders visit [www.visitscottishborders.com/eventscalendar](http://www.visitscottishborders.com/eventscalendar)

## Support

The Scottish Borders Festival of Walking gratefully acknowledges the generous support of the following bodies:

- VisitScotland Borders
- Scottish Borders Council
- Festival 2005 Organising Committee

plus the wholehearted support and enthusiasm of the people of Jedburgh, Jedburgh Walkers and the landowners over whose land we will be walking, without whom the Festival would not be possible. The Festival of Walking is organised as part of the Scottish Border Paths project, which aims to promote countryside access in the Scottish Borders.





## Festival 2007

If you would like to receive advance information for the 13th Scottish Borders Festival of Walking, based on XXXX in early XXXX 2007. Please complete and return the coupon.

Title ..... First name ..... Surname .....

Address .....

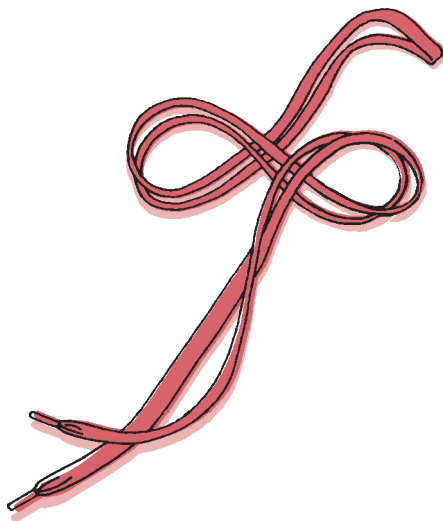
.....

Town ..... Postcode .....

email ..... Year of Birth .....

Return coupon to: Walking Festival 2006, VisitScotland Borders, Shepherds Mill, Whinfield Road, Selkirk, Scotland TD7 5DT, or add your name to our mailing list by emailing [bordersinfo@visitscotland.com](mailto:bordersinfo@visitscotland.com).

**Data Protection:** We may send you information on associated events, or walking in the Scottish Borders, from time to time. If you do not wish to receive this information please place a cross in the box here:





This brochure is being part funded by the European Community European Regional Development Fund.

Europe and Scotland  
Making it **work together**

---

Designed by Scottish Borders Council Graphic Design Section  
Maps by David Langworth  
Printed in the Scottish Borders June 2006